

RAIDON



InTANK iR2823

Internal RAID Module for Data Security and Data on the Move

RAID Setting Button, LCD Display and LED Indicators for System Monitoring

iR2823 provides RAID mode setting buttons and built-in LCD & LED display functions that can monitor and display the RAIDbox's status. The iR2823 supports 2 x 5.25" CD-ROM size, it can perfectly match servers, industrial computers, and workstations.

iR2823 can use two 3.5" or 2.5" SATA disk to set one RAID 1 or RAID 0 group, and provides one additional 2.5" SATA disk as independence disk (JBOD) for diversify usage. It is the ideal Hardware RAID module for Data Security and Data on the Move.

Features

1. RAID Mode Setting Buttons
2. LCD for System Monitoring
3. Supports Hardware RAID 1/0
4. Support 2 x 3.5"/2.5" SATA Disk (HDD/SSD)(RAID)
5. Support 1 x 2.5" SATA Disk (HDD/SSD)(JBOD)
6. Plug & Play, No Driver Needed
7. GUI can show the disk S.M.A.R.T. information (Windows only)
8. Disk Hot-swappable

User-friendly Display

iR2823 provides RAID mode button setting, and is equipped with clear readable LCD display and LED indicators for system monitoring during operation so users can easily grasp the status of the system at all times. Moreover, it comes with visual and audio alarms whenever failure occurs.



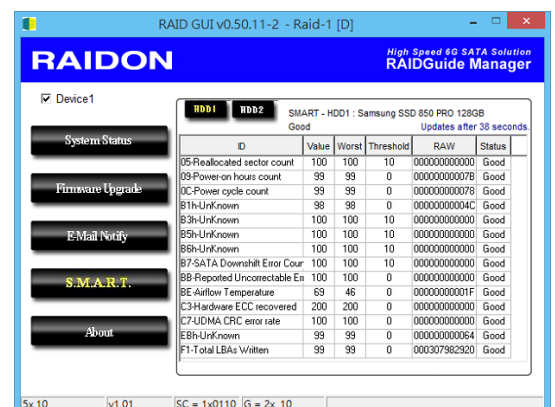
Easy-to-use Disk Tray Module

RAIDON's easy-to-use disk tray module comes with a key lock and secure the disk with screws. User can buy several disk tray modules and secured the disks first, once there is one disk in iR2823 is failure, just replace the disk directly. It can greatly reduce the wait time for system maintenance. The disk tray provides a key lock, which will not be easily extracted, increasing data security.



GUI can Show the Disk S.M.A.R.T Information

iR2823 provides the GUI that can show the S.M.A.R.T (Self Monitoring, Analysis, and the Reporting Technology) Information of disks. Just open the RAIDGuide Manager Utility, user can using it to know the disks' status, and could even to replace any disk which is might be damaged in advance to help an even better protection for all your data.

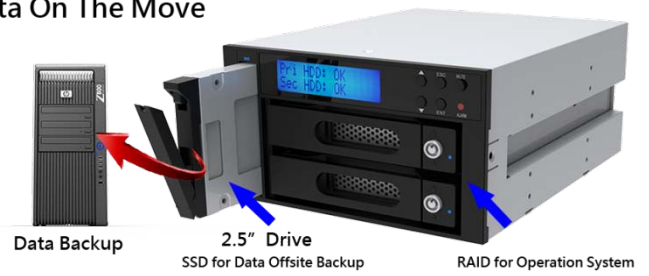


RAID Data Security



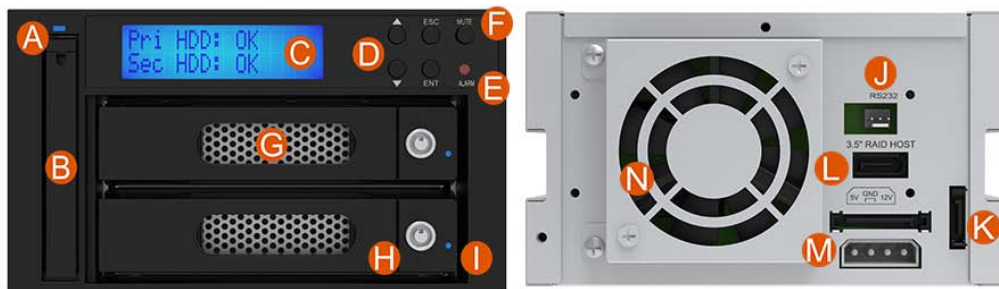
(1) 2.5" SSD OS System + RAID Data Backup

Data On The Move



(2) RAID for Operation System + Additional SSD for Data Offsite Backup

Product Appearance Description



A. 2.5" HDD status indicator LED
 B. 2.5" HDD tray
 C. LCD Display
 D. RAID Setting Button
 E. Alarm indicator LED

F. Mute Button
 G. RAID HDD tray
 H. Key Lock
 I. HDD status indicator LED

J. RS232 switch
 K. SATA Port(for 2.5" HD host)
 L. SATA Port(for RAID host)
 M. Power Socket
 N. Cooling Fan

Interfaces	2 x SATA III (6Gbps)(One for RAID and another for JBOD)
Compatible Drive	2 x 3.5"/2.5" SATA Drive(HDD/SSD)(RAID) 1 x 2.5" SATA Drive (HDD/SSD)(JBOD)(Under 9.5mm height)
Certification	CE / FCC
RAID Mode	1 x RAID 1 / RAID 0 Group 1 x JBOD (Single)
Operating System Support	Windows, Linux
Cooling Fan	1 x 6cm Fan
Electrical and Operating Requirements	*Line voltage: 12V+5V, DC *Operating temperature: 0° to 40° C (32° to 104° F) *Storage temperature: -20° to 47° C (-4° to 116° F) *Relative humidity: 5% to 95%, no condensing
Size	Height: 84 mm Width: 148 mm Depth: 202 mm
Product Code	EAN : UPC :
Carton	8 pcs per carton
Package Accessories	1 x iR2823 1 x SATA Cable 1 x Accessory 1 x Quick Installation Guide